

For immediate release

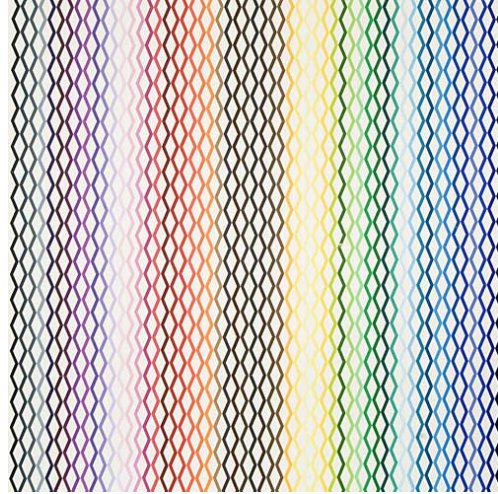
Contact: Locks Gallery
T 215.629.1000/F 215.629.3868
info@locksgallery.com

Polly Apfelbaum *Color Notes*

February 3–25, 2010

Reception:
Friday, February 5
5:30–7:30pm

Gallery Hours:
Tuesday–Saturday, 10am–6pm



Wave Park 5, 2008, monochrome print on Hiromi handmade Kozo triple thick paper, 79 x 79 inches

January 2010, Philadelphia, PA – Locks Gallery is pleased to present an exhibition of monochrome prints by Polly Apfelbaum. *Color Notes* will be on view February 3rd through the 25th, 2010. There will be a reception on Friday, February 5th, from 5:30 to 7:30pm.

In her forth exhibit at Locks Gallery, *Color Notes* features a selection of work from each of her “Park” series (Dogwood Park, Love Park, Rainbow Park and Wave Park), completed between 2007 and 2009, and published by Durham Press.

Each print is unique and painstakingly produced by several methods on handmade Japanese paper. The Park prints are created by arrangements of dozens of carved woodblocks, printed either individually or in sections.

Apfelbaum has pursued a diverse practice over the last twenty-five years, primarily focused on sculpture and installation. Her work consistently references Pop imagery, Color Field painting and Minimalist forms, while exploring the myriad properties of color. The exhibition’s title is taken from a new print series also on view and indicative of her ongoing study.

Her most recent solo museum show was held at the Milton Keynes Gallery (Great Britain). A large-scale survey organized by the ICA Philadelphia (2003) traveled to

(continue to next page)

600 Washington Square South
Philadelphia PA 19106
tel 215.629.1000 fax 215.629.3868
info@locksgallery.com
www.locksgallery.com



CAC, Cincinnati and the Kemper Museum of Contemporary Art in Kansas City, Missouri. The artist has exhibited at museums throughout the U.S. and has had one-person gallery exhibitions in London, Vienna and Sao Paolo.

The artist's work is in the collections of a number of museums, including the Dallas Museum of Art, Los Angeles County Museum of Art, MoMA, The Philadelphia Museum of Art, Princeton University Art Museum and The Whitney Museum. Her "fallen paintings" - sunburst arrangements composed of hundreds of dyed and cut pieces of synthetic fabric - have been widely seen in museums in the U.S. and Europe. *Big Bubbles* (2000) was recently included in the exhibition, "Notations: The Closing Decade" at the Philadelphia Museum of Art.

The artist was born in Abington, PA and lives in New York.

Apfelbaum's *Color Notes* and *Imprints in the Landscape*, which features photographs by Diane Burko on the 3rd floor of the gallery, are Independent Projects of Philagrafika 2010.

Locks Gallery is located at 600 Washington Square South in Philadelphia, PA. Gallery hours are Tuesday through Saturday, 10am to 6pm. For additional information, please contact Locks Gallery at 215.629.1000 voice, 215.629.3868 fax, or info@locksgallery.com.

####